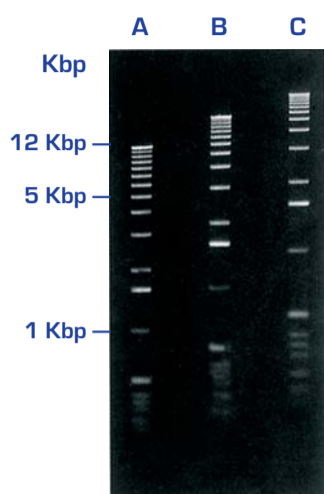


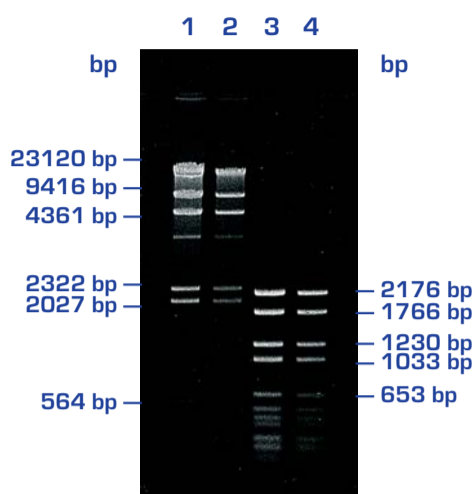
Your ideal solution for electrophoresis

Standard Agarose



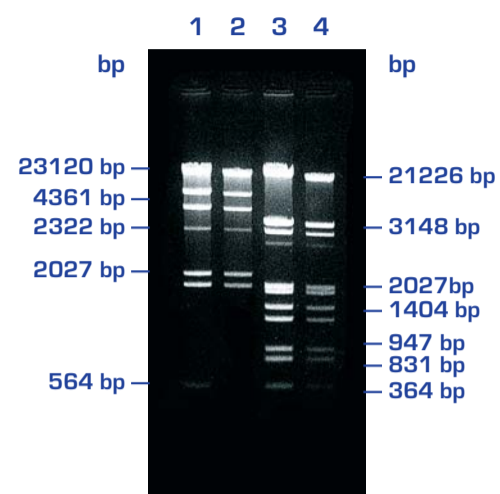
D-1 LE

Agarose gels in 1X TAE buffer A - 0.75%, B - 1%, C - 1.25%.
Marker: 1 kbp ladder. **Electrophoresis conditions:** submarine gel, 2 hours 30 min, 4.5 V/cm in 1X TAE buffer.



D-2

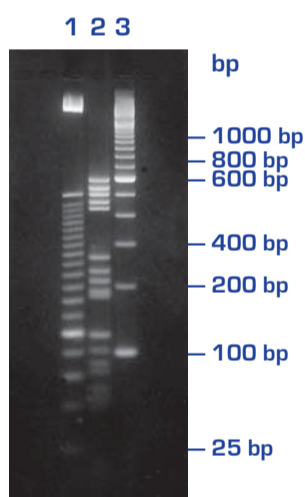
1% agarose gel. **Markers:** lanes 1 - 2: Lambda DNA. Hind III. Lanes 3 - 4: pBR328.BglI + pBR328. Hind III. **Electrophoresis conditions:** 90 min, 4.5 V/cm in 1X TAE buffer.



D-5

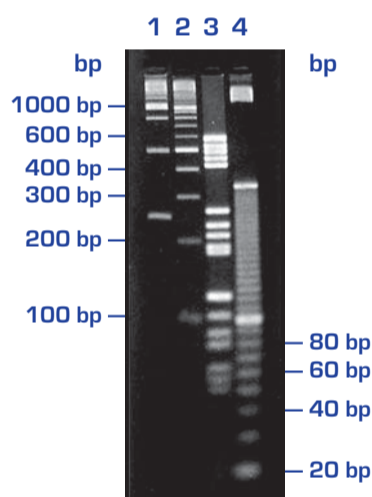
1% agarose gel. **Markers:** lanes 1 - 2: Lambda DNA. Hind III. Lanes 3 - 4: Lambda DNA. EcoRI + Hind III. **Electrophoresis conditions:** 90 min, 4.5 V/cm in 1X TAE buffer.

High Resolution Agarose



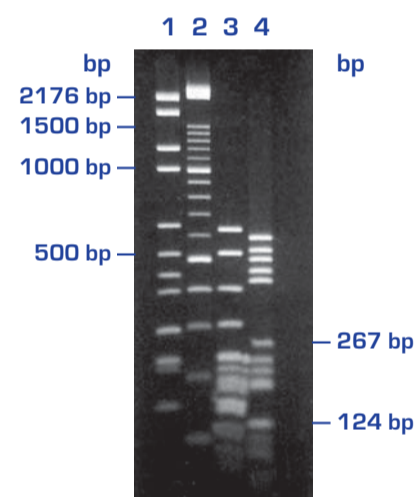
MS-6 METAGEL

3% agarose gels in 1X TAE buffer. **Markers:** lane 1: 25 bp ladder. Lane 2: Molecular weight marker V (Roche). Lane 3: 100 bp ladder. **Electrophoresis conditions:** submarine gel, 2 hours 30 min, 4.5 V/cm in 1X TAE buffer.



MS-8

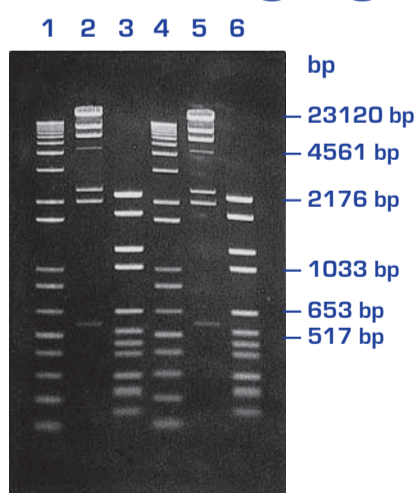
3% agarose gel in 1X TAE buffer. **Markers:** lane 1: 250 bp ladder. Lane 2: 100 bp ladder. Lane 3: Molecular weight marker V (Roche). Lane 4: 10 bp ladder. **Electrophoresis conditions:** submarine gel, 2 hours, 4.5 V/cm in 1X TAE buffer.



MS-12

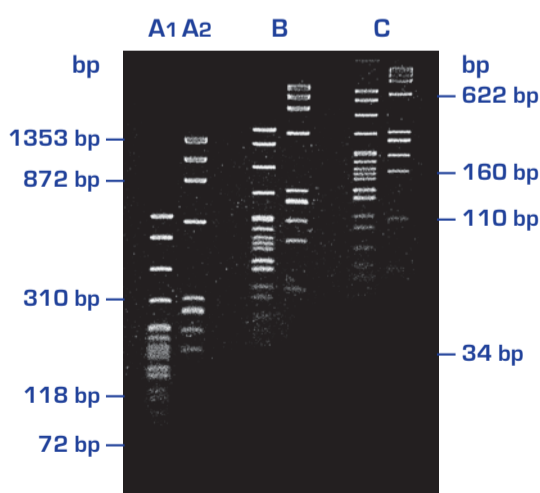
2% agarose gel in 0.5X TBE buffer. **Markers:** lane 1: pBR328DNA. BglI+pBR328DNA. HinfI. Lane 2: 100 bp ladder. Lane 3: pBR322DNA. MspI. Lane 4: Molecular weight marker V (Roche). **Electrophoresis conditions:** submarine gel, 2 hours, 4.5 V/cm in 0.5X TBE buffer.

Low Melting Agarose



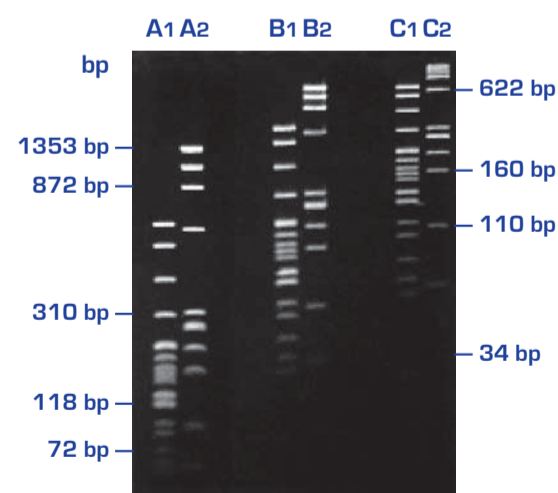
LM

1% agarose gel. **Markers:** lanes 1 - 4: 1 kb ladder. Lanes 2 - 5: lambda DNA. Hind III. Lanes 3 - 6: pBR328DNA. BglI+pBR328DNA. HinfI. **Electrophoresis conditions:** 90 min, 4.5 V/cm in 1X TAE buffer.



NOVAGEL GQT

Agarose gels in 1X TBE buffer. A - 2%, B - 3%, C - 4%. **Markers:** lane 1: pBR322DNA. MspI. Lane 2: ØX174DNA. HaellI. **Electrophoresis conditions:** submarine gel, 2 hours, 4.5 V/cm in 1X TBE buffer.



LM-SIEVE

Agarose gels in 1X TBE buffer. A - 2%, B - 3%, C - 4%. **Markers:** lane 1: pBR322DNA. MspI. Lane 2: ØX174DNA. HaellI. **Electrophoresis conditions:** submarine gel, 2 hours 30 min, 4.5 V/cm in 1X TBE buffer.



LABORATORIOS CONDA • C/La Forja, 9 • 28850 Torrejón de Ardoz MADRID
 Phone +34 91 761 02 15 • Fax +34 91 656 82 28 • export@condalab.com • www.condalab.com