



Candida Chromogenic Agar

New differential and selective medium for the isolation and quick identification of *Candida* species of clinical importance

Rapid identification

Essential for clinics in order to issue the correct treatment, reducing mortality and hospitalization

FORMULA IN GRAMS PER LITER

Glucose	20.00	Peptone	10.00
Chloramphenicol	0.50	Chromogenic Mixture	0.40
Bacteriological Agar	15.00		

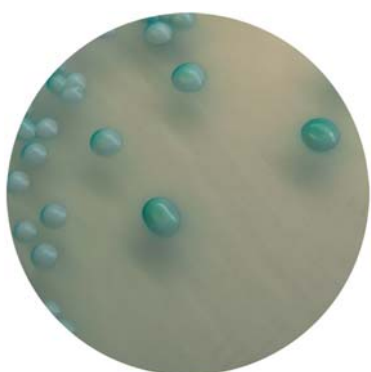
Traditional methods for identification of *Candida* spp.: extensive tests such as carbohydrate fermentation, colony and cell morphology and growth at 37°C and 42°C.

Candida Chromogenic Agar: chromogenic substrates allow direct detection of different *Candida* spp. on the same plate.

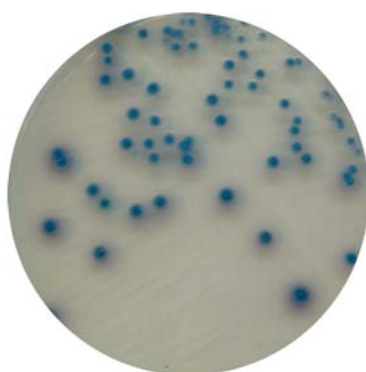
C. albicans **green**

C. tropicalis **blue**

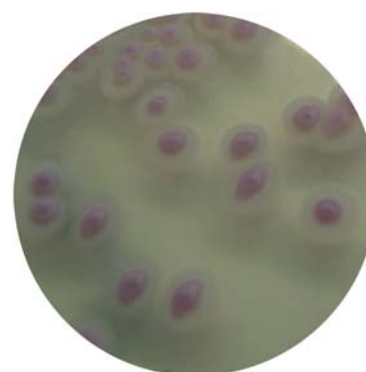
C. Krusei **purple-pink**



C. albicans ATCC 10231



C. tropicalis ATCC 1369



C. krusei ATCC 34135

Cat. N° 1382 CANDIDA CHROMOGENIC AGAR

Cat. N° 958 CANDIDA CHROMOGENIC AGAR PLATE