



Listeria Chromogenic Agar (ISO 11290:2004)

Selective medium for the direct detection
and enumeration of *Listeria monocytogenes**

Only 24 hours
preenrichment

Clearly visible
chromogenic reactions

Results in
only 48 hours

FORMULA IN GRAMS PER LITER

| | | | |
|--------------------------------|-------|----------------------------|-------|
| Meat Peptone | 18.00 | Lithium Chloride | 10.00 |
| Yeast Extract | 10.00 | Tryptone | 6.00 |
| Sodium Chloride | 5.00 | Disodium Phosphate | 2.50 |
| Glucose | 2.00 | Sodium Pyruvate | 2.00 |
| Magnesium Glycerophosphate ... | 1.00 | Magnesium Sulphate | 0.50 |
| X-glucoside | 0.05 | Bacteriological Agar | 13.50 |

LISTERIA LIPASE C SUPPLEMENT (Cat. 6031)

[1 vial for 500 ml of the medium]

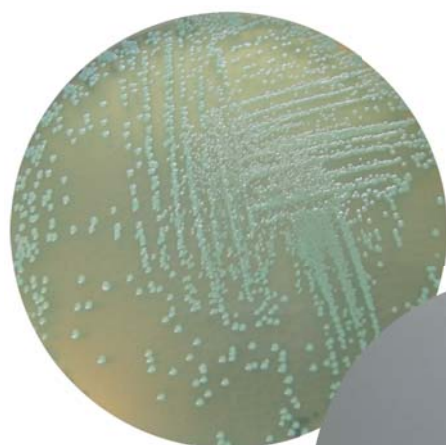
Lipase C Substrate 1 gram

LISTERIA CHROMOGENIC SELECTIVE SUPPLEMENT (Cat. 6040)

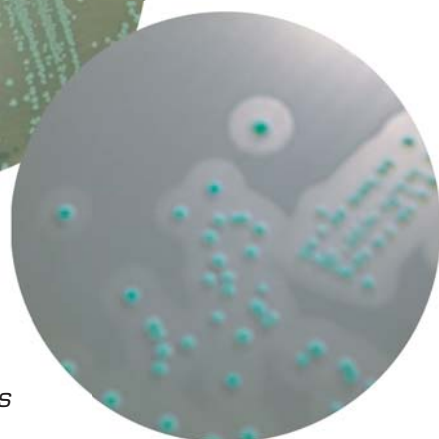
Reconstitute with 5 ml of sterile v/v ethanol - distilled water.

[1 vial for 500 ml of the medium]

Cycloheximide 25 mg
Ceftazidime 10 mg
Nalidixic Acid 10 mg
Polymyxin B 38350 IU



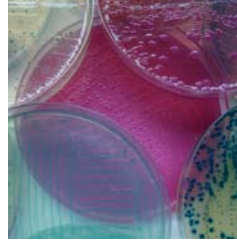
Listeria innocua



Listeria monocytogenes

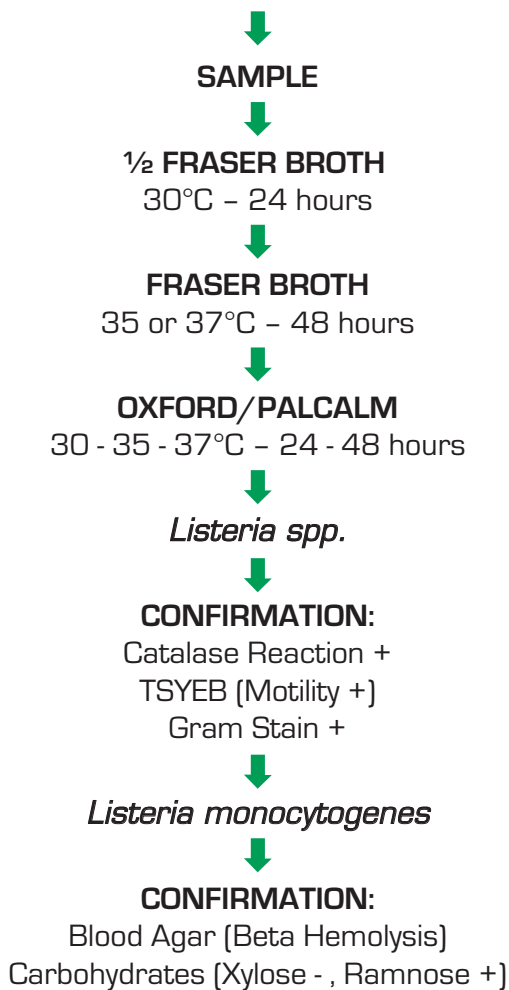
- Cat. N° 1345** LISTERIA CHROMOGENIC AGAR BASE
(ISO 11290:2004)
- Cat. N° 6031** LISTERIA LIPASE C SUPPLEMENT
- Cat. N° 6040** LISTERIA CHROMOGENIC SELECTIVE
SUPPLEMENT
- Cat. N° 939** LISTERIA CHROMOGENIC AGAR PLATE
(ISO 11290:2004)

*According to Ottaviani and Agosti



Listeria Chromogenic Agar (ISO 11290:2004)

TRADITIONAL METHOD



LISTERIA CHROMOGENIC AGAR (ISO 11290:2004)

